

Área de Forma Viga
 $(0,15+0,15+0,30+) \times 18,63 \times 2 = 22,35 \text{ m}^2$

Área de Forma Pilar
 $(0,15+0,15+0,40+0,40) \times 5 \times 3,5 = 16,5 \text{ m}^2 / 4 = 4,12 \text{ m}^2$

Volume Concreto Sapata
 $1,00 \times 1,00 \times 0,30 \times 3 = 0,90 \text{ m}^3$

Volume Concreto Viga
 $0,15 \times 0,40 \times 16,88 \times 2 = 2,02 \text{ m}^3$

Volume Concreto Pilar
 $0,15 \times 0,40 \times 5 \times 3,5 = 1,05 \text{ m}^3$

Peso Armadura

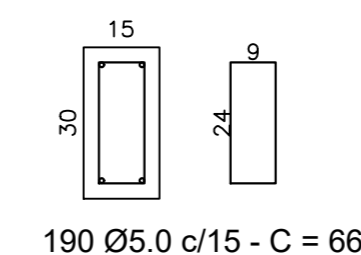
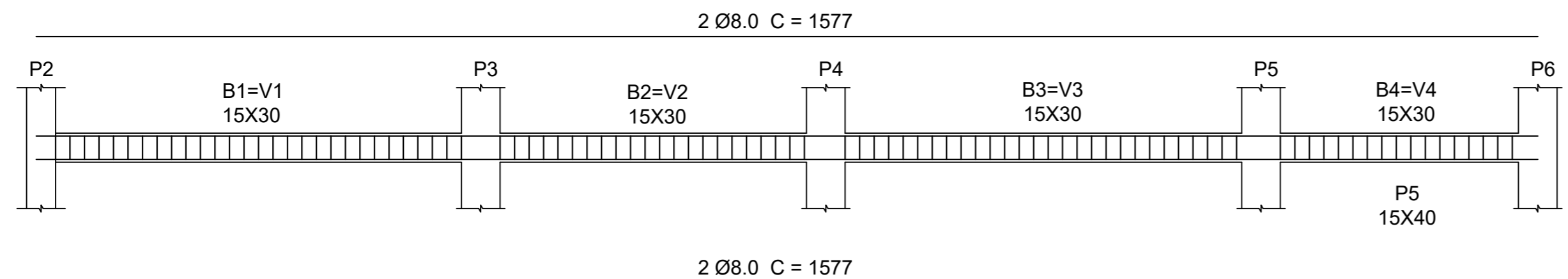
Peso Armadura Viga

$8.0 \text{ } \varnothing - 4 \times 18,57 \times 2 \times 0,395 = 58,68 \text{ kg}$
 $5.0 \text{ } \varnothing - 209 \times 2 \times 0,66 \times 0,154 = 42,48 \text{ kg}$

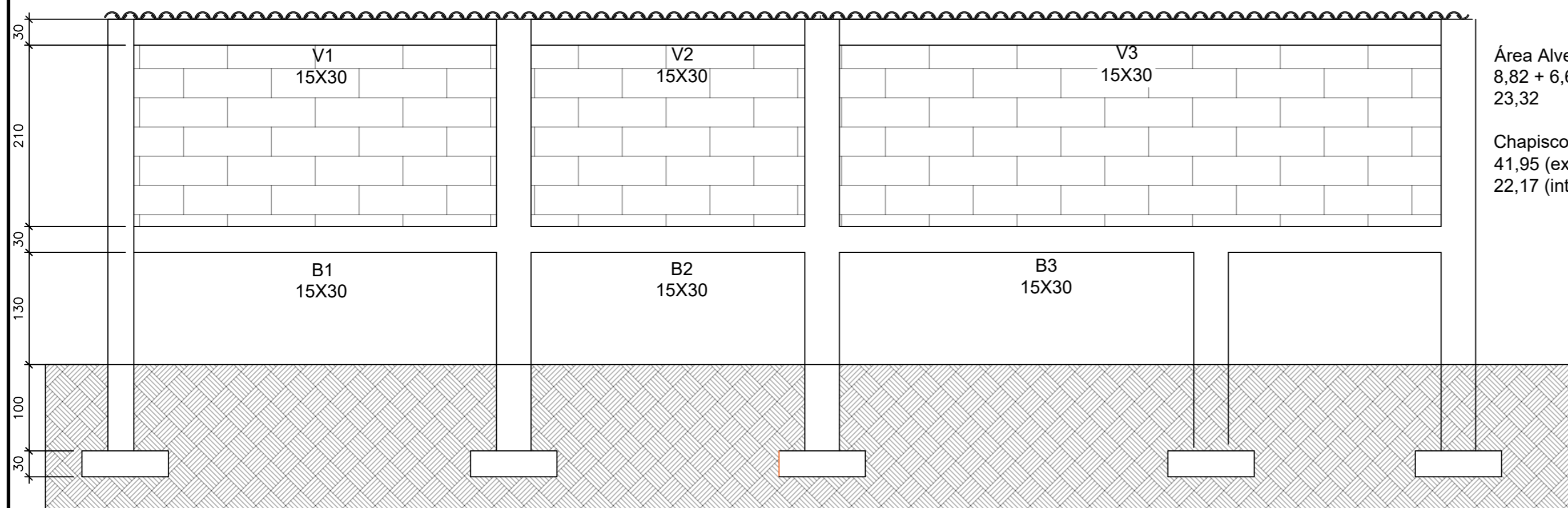
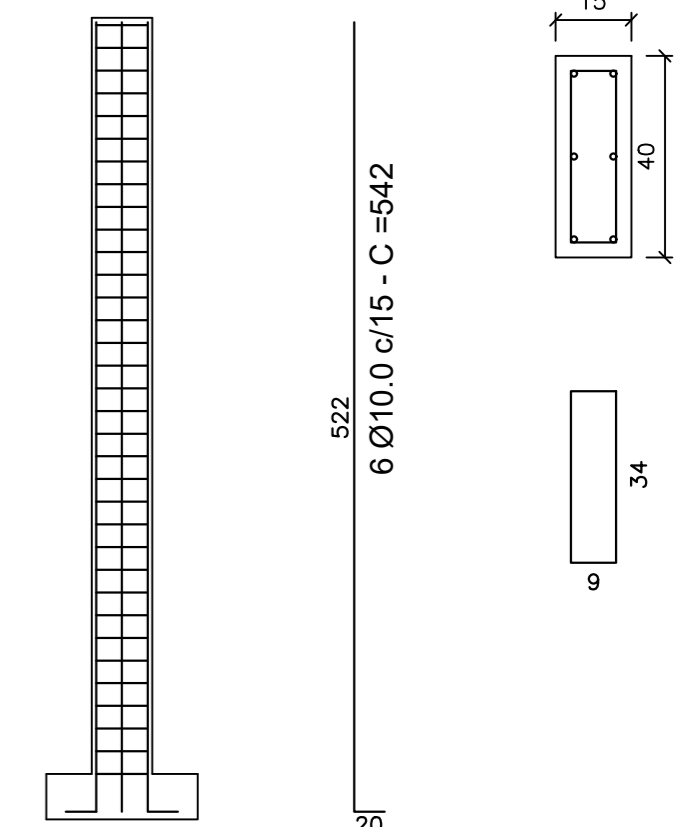
Peso Armadura Pilar

$10.0 \text{ } \varnothing - 6 \times 5,42 \times 3,5 \times 0,617 = 70,22 \text{ kg}$
 $5.0 \text{ } \varnothing - 30 \times 3,5 \times 0,86 \times 0,154 = 13,91 \text{ kg}$

$6.3 \text{ } \varnothing - 10 \times 2 \times 1,40 \times 3 \times 0,245 = 20,48 \text{ kg}$



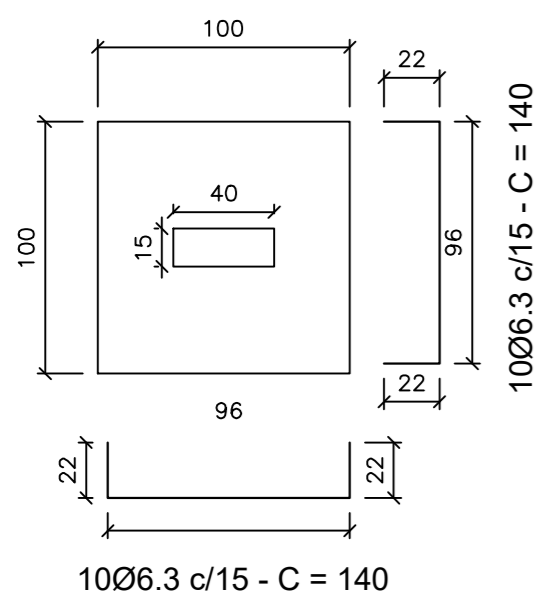
P1=P3=P5=P6
 (15x40)



Área Alvenaria
 $8,82 + 6,66 + 7,84 = 23,32$

Chapisco
 $41,95 \text{ (ext)} + 9,14 \times 2 + 22,17 \text{ (int)} = 82,4 \text{ m}^2$

S1=S3=S5=S6
 (100x100)



Reforma Cozinha Escola Alzira Carvalho

AUTOR:

PABLO JOSÉ LIMA DA SILVA CREA 338191MG

PROPRIETÁRIO:

PREFEITO HIRAM VINÍCIUS MENDONÇA FINAMORE

DATA: 25/09/2023

Folha: 03/03

Escala: Indicada

ENDEREÇO: Palma - MG

DESENHO: Estrutural



PREFEITURA MUNICIPAL DE PALMA

PRAÇA GETULIO VARGAS, 26, CENTRO, PALMA - MG